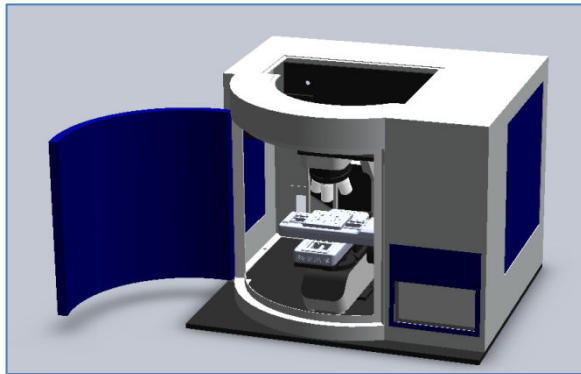




Uni-G2D, Micro Raman for Graphene



High stability Excitation source

: Standard 532nm DPSS or 473nm LD Laser set.

Microscope Raman Sample Chamber

: 10x, 20x, 50x, 100x Objective Lens

3MP Camera & LED source for sample monitoring

VPG Spectrometer & TE cooled CCD detector set

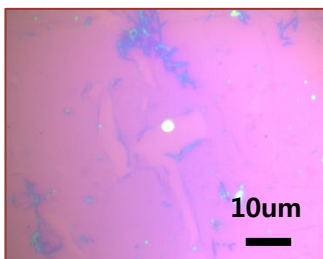
, Back-illuminated 1024x128pixels, -70C.

; Raman shift Range : from 90cm⁻¹ (~200cm⁻¹ for 473nm)

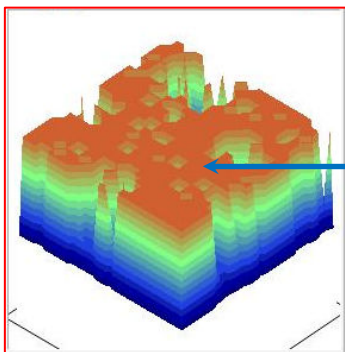
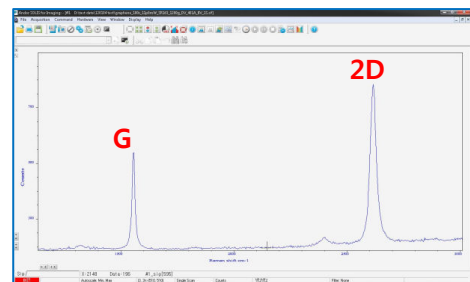
Optional module

Dual or Triple Laser source available.

473nm, 488nm, 514nm Ar-ion, 632.8nm He-Ne, 785nm LD Lasers, etc.



Motorized XY stage module for Mapping system



Orange area : "2D" peak high

The software interface includes the following sections:

- MAPPING TYPE:** TYPE: AndorIDUS, TEMP: [blank]
- ACQUISITION SETUP:** INTEGRATION TIME: 0.50000ms, AVERAGE: 1, FWHM BASE LINE: 250.000000
- MAPPING SETUP:** WAFER SIZE: 0.05mm, EDGE SIZE: 0mm, SCAN STEP: 0.005mm
- REFLECTIVE INDEX:** COATING: [blank], SUBSTRATE: [blank]
- 2D Raman Map:** Shows RamanShift (cm⁻¹) from 1317.2 to 2763.8. A color scale ranges from -1100 to 2763.
- Intensity Map:** Shows Intensity from 192.0 to 1436.0. A color scale ranges from -100 to 700.
- FWHM Map:** Shows FWHM from 0.0 to 376.3. A color scale ranges from -100 to 100.
- 3D Intensity Plot:** A 3D surface plot showing intensity variations across the sample area.

Blue area : "G" peak high

